

LIANA COLLECTION

MOHTASHAM™
— CARPET —



MOHTASHAM™
— CARPET —

Code: Hani

DESCRIPTION

Color: Gold



MOHTASHAM™
— CARPET —

Code: Hani

DESCRIPTION

Color: zoghaliabi



MOHTASHAM™
— CARPET —

Code: Hani

DESCRIPTION

Color: Almasi

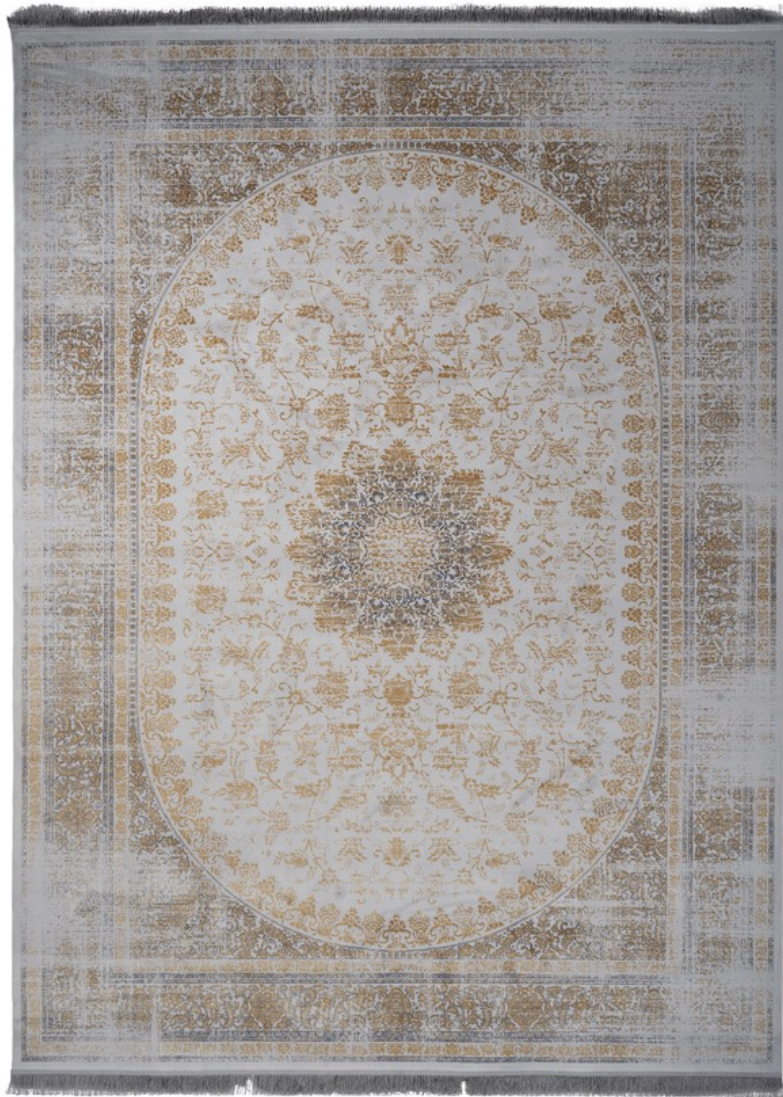


MOHTASHAM™
— CARPET —

Code: Hani

DESCRIPTION

Color: Almasisorbi



Code: Hani

DESCRIPTION

Color: Almasisorbi



MOHTASHAM™
— CARPET —

Code: Hani

DESCRIPTION

Color: Sorbi



MOHTASHAM™
— CARPET —

Code: Hani

DESCRIPTION

Color: Zoghaliabi



Code: Javid

DESCRIPTION

Color: Zoghali



MOHTASHAM™
— CARPET —

Code: Leyli

DESCRIPTION

Color: Almasi



MOHTASHAM™
— CARPET —

Code: Leyli

DESCRIPTION

Color: Zoghali

Code: Linda

DESCRIPTION

Color: almasi





MOHTASHAM™
— CARPET —

Code: Linda

DESCRIPTION

Color: Sadafi



MOHTASHAM™
— CARPET —

Code: Linda

DESCRIPTION

Color: Sorbi



Code: Maysa

DESCRIPTION

Color: Almasi

Code: Nadia

DESCRIPTION

Color: Almasi



Code: Nadia

DESCRIPTION

Color: Sorbi



Code: Nikroo

DESCRIPTION

Color: Sorbi





MOHTASHAM™
— CARPET —

Code: Parisa

DESCRIPTION

Color: Almasi



Code: Parisa

DESCRIPTION

Color: Sorbi



Code: Parto

DESCRIPTION

Color: Sadafi-talae



Code: Parto

DESCRIPTION

Color: Zoghali-abi



Code: Rakhsha

DESCRIPTION

Color: Almasi



Code: Rakhsha

DESCRIPTION

Color: Almasiabi



MOHTASHAM™
— CARPET —

Code: Rakhsha

DESCRIPTION

Color: Sorbi



MOHTASHAM™
— CARPET —

Code: Rakhsha

DESCRIPTION

Color: SadafiGold



Code: Romina

DESCRIPTION

Color: Almasi



Code: Romina

DESCRIPTION

Color: Sorbi



Code: Sahand

DESCRIPTION

Color: Zoghali



Code: Sahand

DESCRIPTION

Color: Sorbi



Code: Shifteh

DESCRIPTION

Color: Sorbi



Code: Tabnak

DESCRIPTION

Color: sadafi



MOHTASHAM™
— CARPET —

Code: Tolu

DESCRIPTION

Color: Sorbi



MOHTASHAM™
— CARPET —

Code: Tolu

DESCRIPTION

Color: Zoghali



Code: Zivar

DESCRIPTION

Color: Almasi



Code: Zivar

DESCRIPTION

Color: Zoghali



MOHTASHAM™
— CARPET —

Copyright by Mohtasham Carpet Co. © 2021-2022 Allright Reserved